

INSTALSYSTEM 5 – HIGH LEVEL OF ERGONOMICS

MARCIN KRZYŻANOWSKI

The *InstalSystem 5* package is full of functions and tools that improve the speed and comfort of work. Some are simple, others more complex, but their common goal was to take ergonomics to a higher level. The article presents selected tools and functions.

Integration of all modules in one application

Thanks to the integration of all functional modules in one application, there is no need for cumbersome switching between programs. To design or view the already designed installation, simply switch the editing scope. Configurable visibility of individual editing scopes (with visible designed installations) allows you to easily predict and remove collisions. In addition, once imported building model from IFC file or loaded drawing underlay, once created building structure, will be used to create a comprehensive project covering various types of installations. Printouts of drawings may contain a set of designed installations or only selected ones.

Customizable user interface

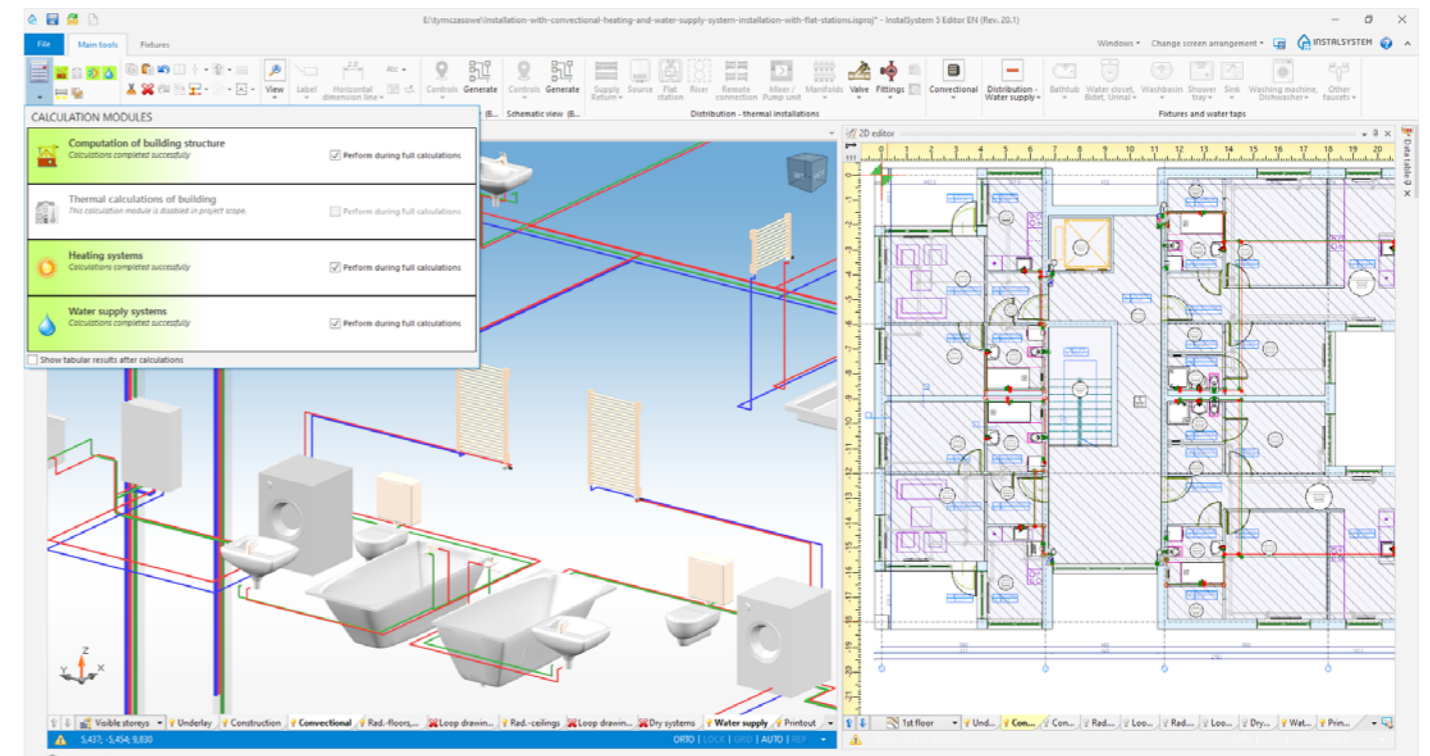
Thanks to the configuration and saving screen composition, it is possible to optimally plan and arrange the program windows for each of the subsequent stages of project implementation. By saving and then choosing the right composition from the list, you can quickly get the arrangement

where work is the most comfortable and effective. The most commonly used functions and tools can be assigned keyboard shortcuts. Similarly, the set of functions visible after pressing the right mouse button is fully configurable.

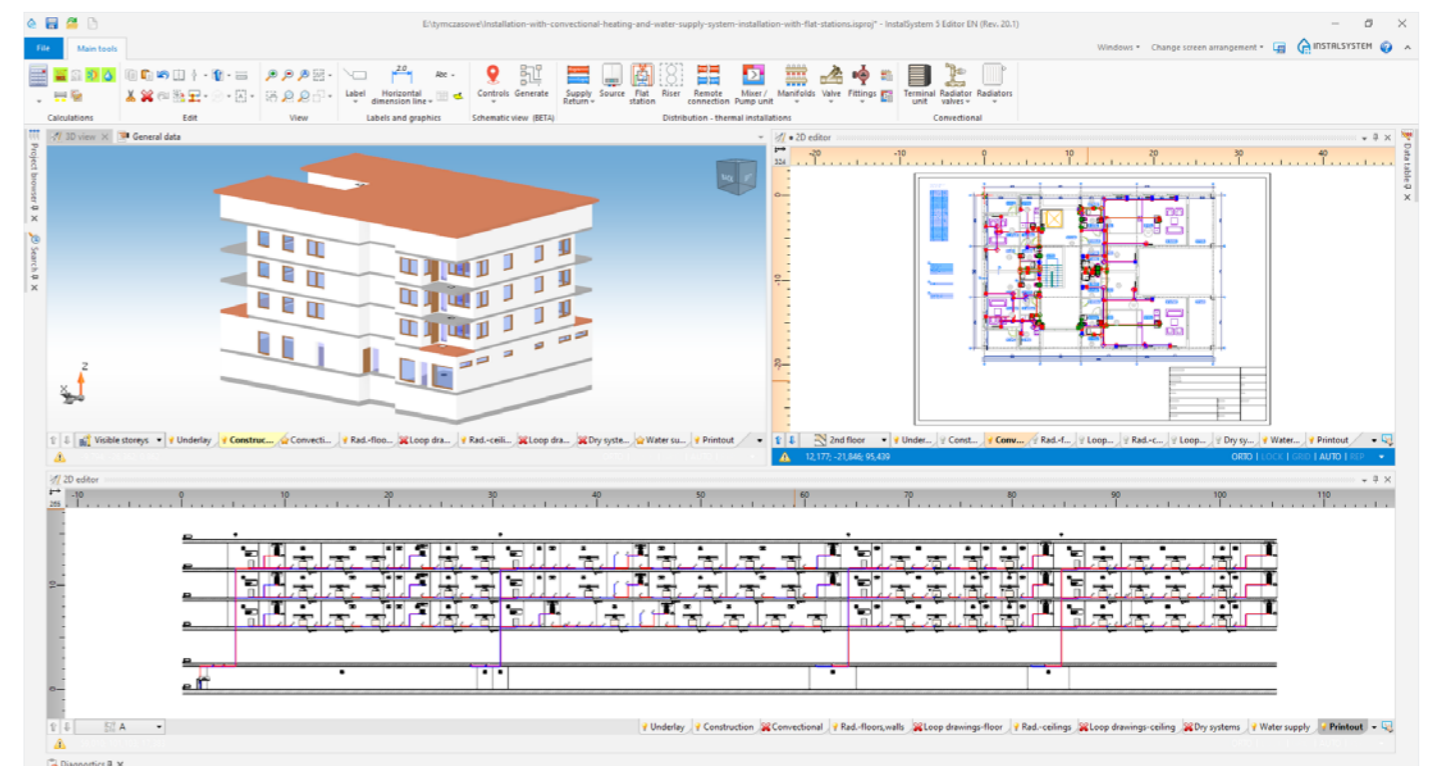
General data and project templates

A set of standard project data, optionally with graphic elements (e.g. drawing chart), can be saved as project templates. In this way, after creating the appropriate number of predefined templates of typical projects, the designer avoids the need to repeat the same preparatory steps multiple times when working on subsequent projects. Thanks to the inheritance system, general data is propagated to the elements of the installation introduced in the project. The „computer” or „pencil” symbol displayed next to a specific data field indicates whether the value is from general data (or catalog data) or has been individually modified.

→ [Watch that short video!](#)



1 Integration of all calculating modules



2 Example screen composition

Filters of the catalogues

The *InstalSystem 5* package is equipped with different types of product catalogues for building designed installations. Finding the right one is facilitated by extensive catalogue filters, limiting the list of displayed catalogues only to those containing a given group of products (for example: radiators, flat stations, valves for tap water installations, etc.). Alternatively, you can use the catalogue search engine by entering the search string (e.g. system, product or manufacturer name). The symbols presented to the right of the names of each catalogue indicate the types of elements contained in it and the availability of additional graphic information about the products.

Interactive connection of program windows

The interactive connection of the program windows allows you to quickly find and

highlight the indicated element of the installation in all active program windows, for example in a plan view, schematic view, 3D view or in result tables. Additionally, after placing the mouse cursor on a given element, hint with detailed technical information and parameters is displayed. This facilitates the analysis of the project, calculation results and finding the cause of irregularities reported by the diagnostics of the program.

Tips for solving typical design problems

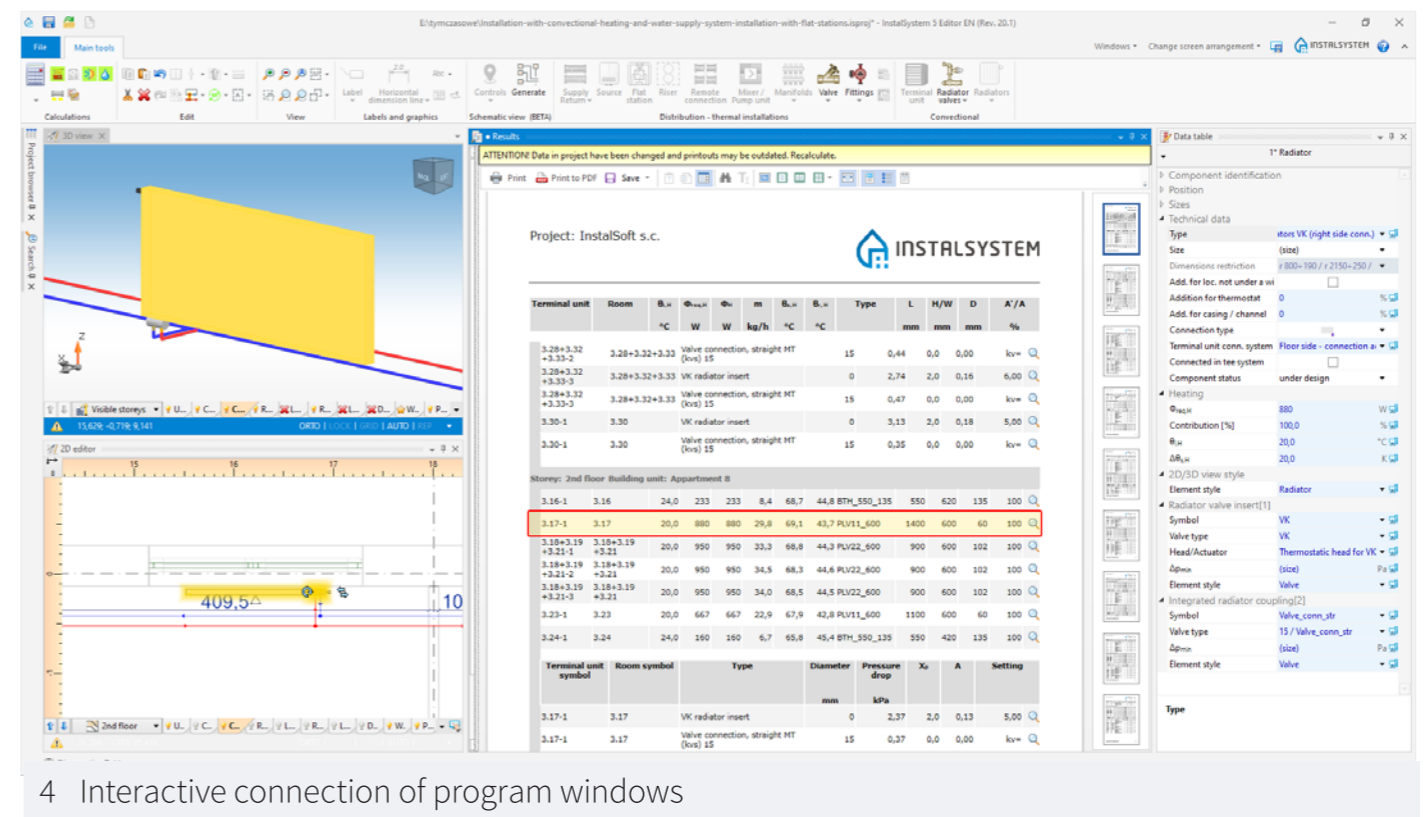
For typical errors and design problems diagnosed by the program, help articles from the *HelpSystem* platform are linked, containing common causes and solution hints. The correct article opens automatically after clicking the „?“ icon at the given diagnostic message.

Easy and quick access to older versions of the program

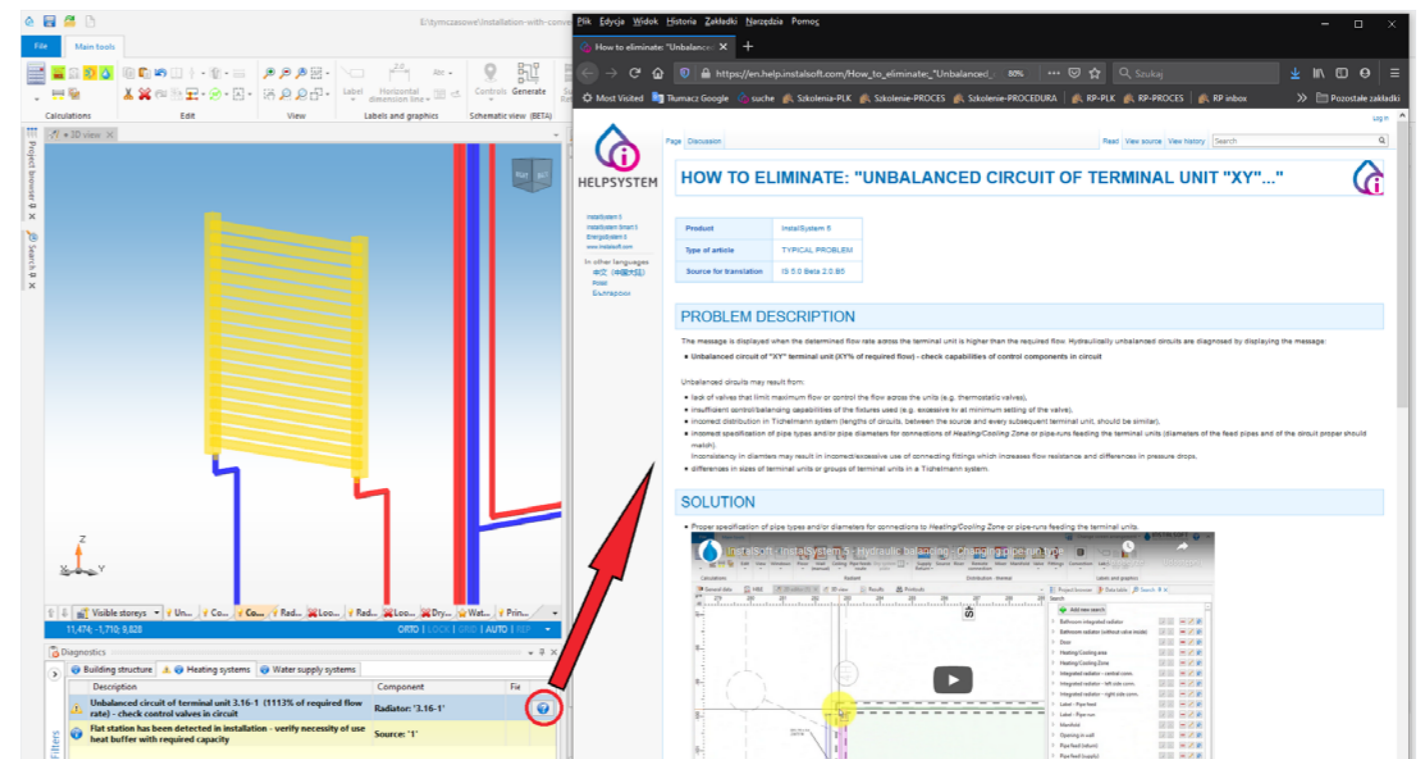
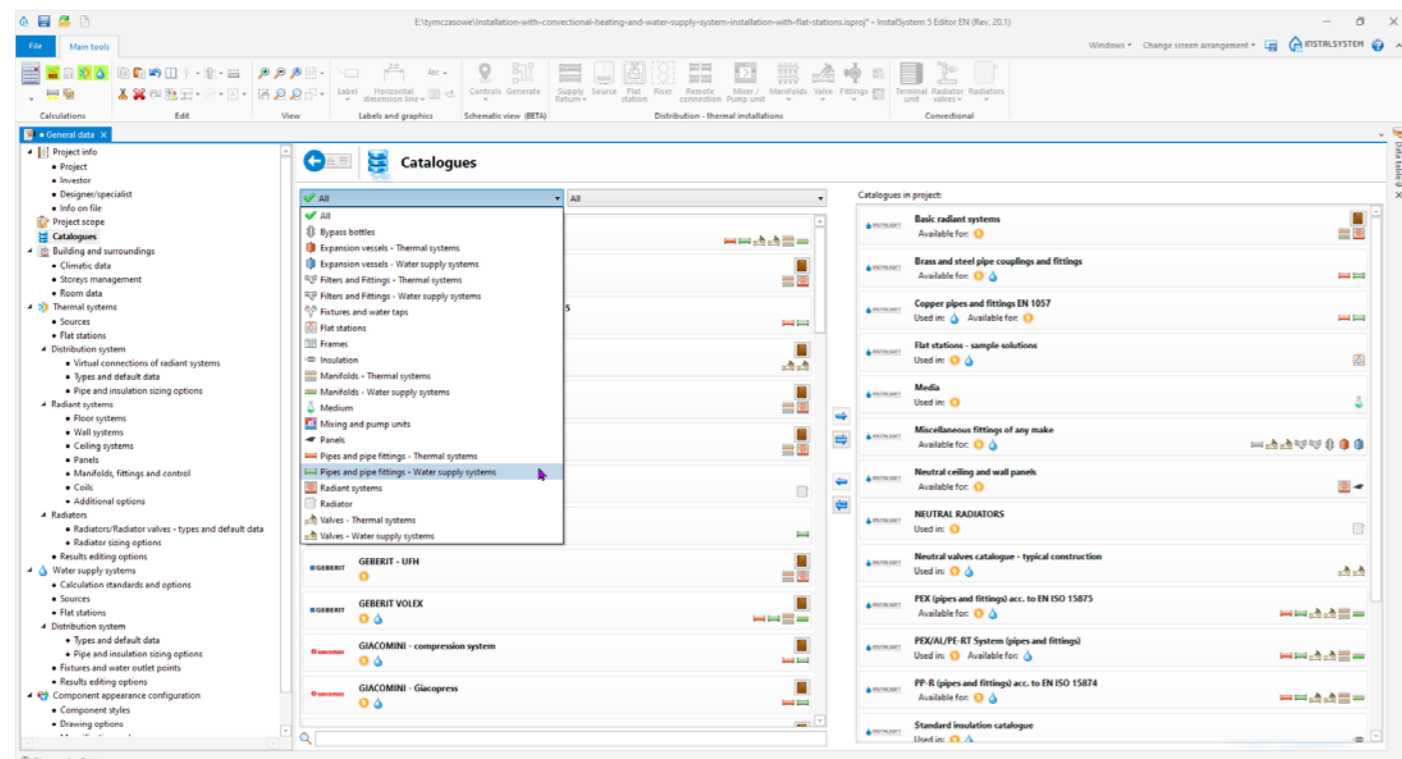
In the first phase of opening the project file,

the program recognizes the version in which it was last saved. By choosing the latest or older version of the program, the designer has

control over the state of the application itself which performs calculations as well as product catalogues that will be used in the project.

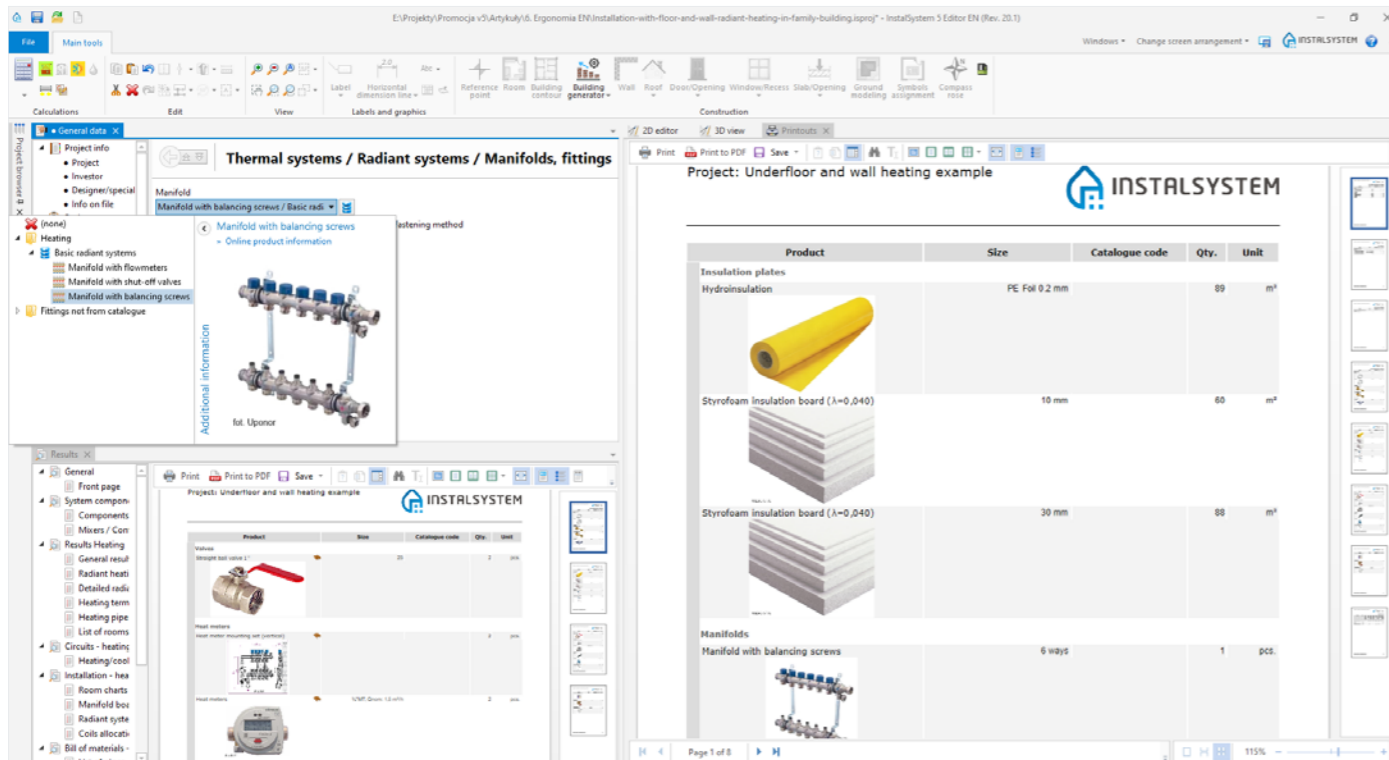


4 Interactive connection of program windows



5 Context article from HelpSystem platform

3 Catalogues and catalogue filters



6 Additional graphical information about products

In this way, the problem of lack of access to products that were withdrawn from catalogues due to product changes during the project was eliminated.

Summary

Each of the functional modules of the *Instal-System 5* package (for example a module for calculating the design heat load) has many additional specialized tools and functions that allow you to implement projects more effectively.

More detailed information about the program's functions can be found on our YouTube channel and *HelpSystem* platform. We encourage you to download the free trial version and share your opinion on the program and expectations about its further development with us.

